

The SCOLLAR Trust

News from the Southend Consortium of Lifelong Learning And Regeneration Spring 05

NEW RESOURCES SET TO FLOW INTO SOUTHEND

A 'SCOLLARLY' SUCCESS!

The SCOLLAR Trust, which stands for the Southend Consortium of Lifelong Learning And Regeneration, has got off to a great start following news that the organisation has been successful in its application for charitable status.

The new charity, which has also recently been incorporated as a limited company by guarantee, has been formed to 'enhance education, in particular by providing and assisting with the provision of additional and/or new learning opportunities for the benefit of learners in the area known as Essex. Borough Council'.

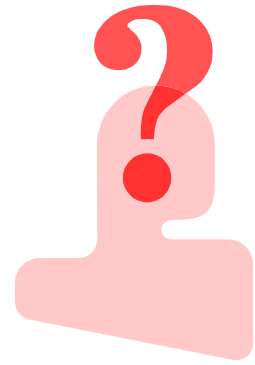
Nearly sixty learning providers have signed up to support the work of SCOLLAR . The company already manages over £1.5 million worth of projects.

Sandra Roberts, Chief Executive Officer of The SCOLLAR Trust and one of its new Directors said "Since its start earlier this year The SCOLLAR Trust has become an important and respected organisation. I am confident that we can achieve some great things in the future and make a real difference to the range and quality of learning opportunities here in Essex".



Pictured Left to Right:
The SCOLLAR Trust
Directors
Sandra Roberts,
David Osborn and
Lorraine O'Reilly

The SCOLLAR Trust: YOUR QUESTIONS ANSWERED



What is The SCOLLAR Trust and what does it do?

The SCOLLAR Trust is a consortium of learning providers. It will act as a point of contact for bidding for funding. It will provide advice, guidance and training on funding opportunities and deadlines. It will help co-ordinate local learning providers who want to make funding applications as a partnership. The SCOLLAR Trust will also submit large strategic bids and act as a 'contractor'.

Who runs it?

The SCOLLAR Trust is managed by a board of Directors and a Chief Executive Officer. The initiative also has some administrative support. Projects have their own staff.

Why is it needed?

The SCOLLAR Trust will help maximise the opportunities for securing large scale funding. It will reduce bureaucracy by preventing duplication in the bidding process. It will also share good practice and expertise.

Who will benefit?

Ultimately, learners in Essex will benefit, but so too will organisations making bids as well as fund givers who will have access to a single point of contact.

What are the costs?

Projects contribute an agreed amount to cover any costs. The company does not make a profit.

MEMBERS SET SCOLLAR AGENDA

Sport, 14-19 initiatives, the Arts and community links have all been identified as priority areas for The SCOLLAR Trust.

Questionnaires returned from members earlier in the year revealed the top four themes. SCOLLAR Director and Chief Executive Officer Sandra Roberts said "We will be prioritising these areas and giving them significant attention over the coming months. Listening to our members is absolutely essential if The SCOLLAR Trust is to be a success".

LOGO NEEDED

Can you help The SCOLLAR Trust in its search for a logo?

Anyone living or working in Southend, young or old, can enter the logo competition. One design will be chosen to be the official SCOLLAR logo, with the winning artist receiving £50.

Entries should be sent in to SCOLLAR, 5th Floor, Civic Centre, Victoria Avenue, Southend, SS2 6ER. Closing date for entries is 10th March 2005.

NEW DIRECTORS FOUND

The SCOLLAR Trust has called on its partners to back the new initiative by coming on board as Directors of the new company.

The SCOLLAR Trust Director Lorraine O'Reilly said 'We were looking for directors of high calibre, good judgement and credibility to help us steer the charity over the next few years with imagination and creativity'.

Directors of the company will have similar responsibilities to those of trustees of charities and will ensure that the business is run properly and in line with regulations set down by Companies House and the Charity Commission. Directors' personal liability is limited to £1.

Directors will attend board meetings three times a year and attend any sub-committee meetings they agree to serve on.

Director Profile

Sandra Roberts has been the Project Director of the EAZ and is now leading the development of the Excellence Cluster

Director Profile

Local accountant David Osborn is a trustee of the EAZ and a Governor at Cecil Jones High School.

Director Profile

Tina Carter was a great friend of the EAZ and is a Governor at Sweyne Park School and Barons Court Infant School

Company Secretary

Janinne Speer is the Company Secretary. Janinne worked for the EAZ until it closed in November 2004 and now works at Temple Sutton Primary School

Director Profile

Lorraine O'Reilly has been Southend Borough Council's Director of Education & Lifelong Learning since April 2002 and is now Director of People First in Harrow

Director Profile

Pat Elliot was headteacher at Westcliff High School for Girls until December 2003.

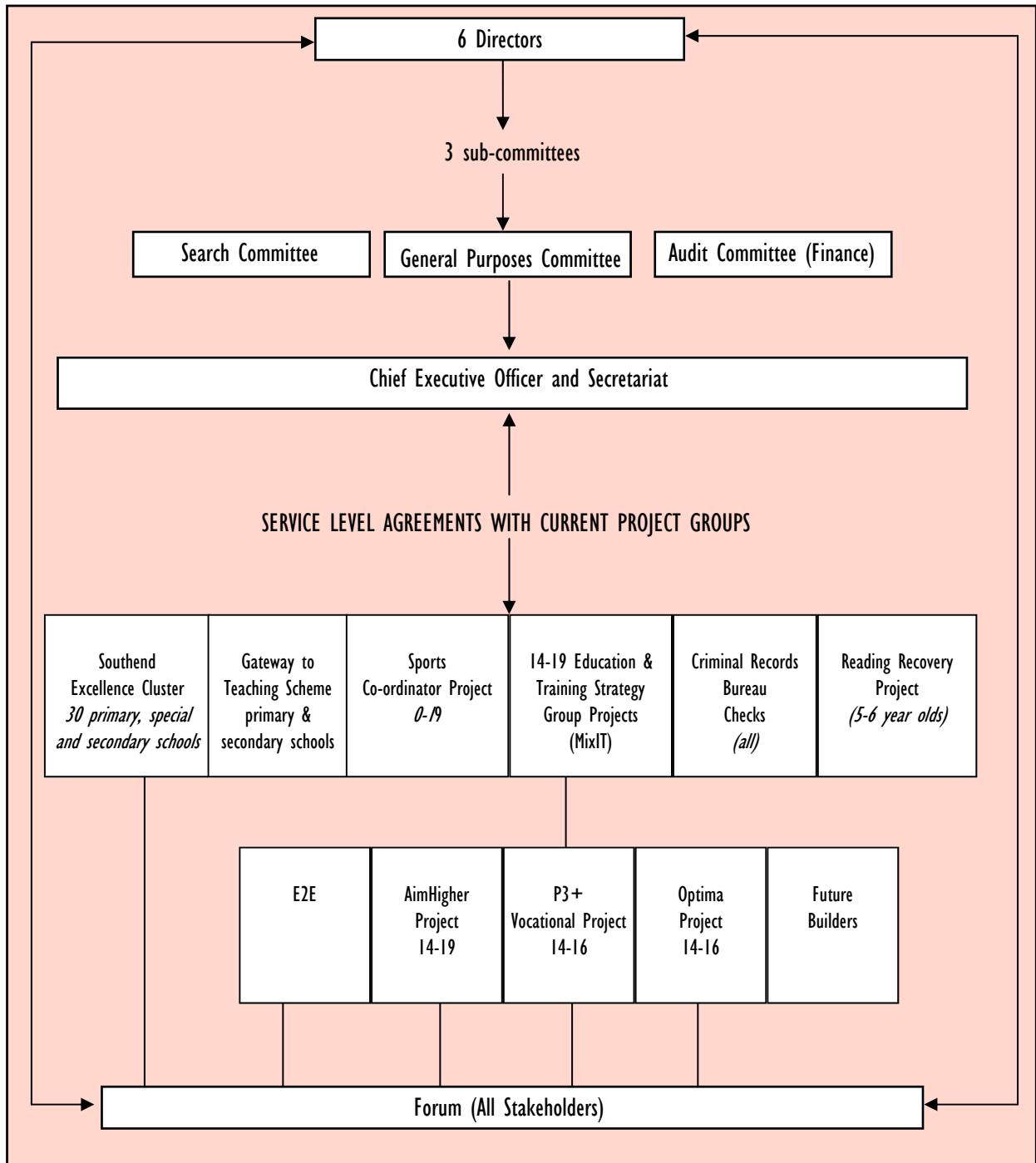
Director Profile

Paul Sedgewick is an accountant who has experience of working with local charitable trusts.

The SCOLLAR Trust MEMBERS LIST

Barons Court Infant School
Belfairs High School
Blenheim Primary School
Bournemouth Park Primary School
Bournes Green Infant School
Cecil Jones High School
Central Training Agency
Chalkwell Hall Infant School
Chalkwell Hall Junior School
Crown College
Darlinghurst Primary School
Earls Hall Primary School
Eastwood Primary School
ECDYP
Edwards Hall Junior School
Essex University
Fairways Primary School
Friars Primary School
Hamstel Infant School
Hamstel Junior School
Heycroft Primary School
Kingsdown
Lancaster
Leigh North Street Junior School
Milton Hall Primary School
Our Lady of Lourdes
Porters Grange Primary School
Prince Avenue Primary School
Priory School
Prittlewell Technology College
Prospects College
Richmond Avenue Junior School
Sacred Heart RC Primary School
Shoeburyness High School
South East Essex College
Southend Adult Community College
Southend High School for Boys
Southend High School for Girls
Southend Youth & Connexions Service
St Bernard's
St Christopher
St George's RC Primary School
St Helen's RC Primary School
St Mary's C of E Primary School
St Nicholas
Temple Sutton Primary School
The Eastwood School
Thorpe Bay High
Thorpe Greenways Junior School
Thorpedene Infant School
Thorpedene Junior School
Trident Trust
Vocational Training Services
West Leigh Infant School
West Leigh Junior School
Westborough Primary School
Westcliff High School for Boys
Westcliff High School for Girls

THE SCOLLAR TRUST STRUCTURE



The SCOLLAR Trust LIMITED

5th Floor, Civic Centre, Victoria Avenue, Southend on Sea, SS2 6ER

Telephone 01702 534880 Fax: 01702 215887

Email sandraroberts@southend.gov.uk